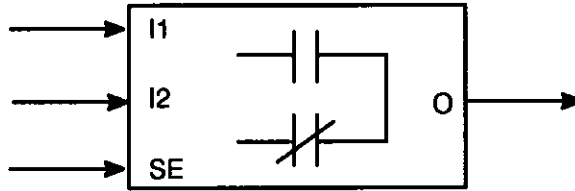


34.0 SWITCH

This function can be used in AutoMax Control Block tasks and UDC Control Block tasks.



Function

If SELECT = TRUE then OUTPUT = INPUT1
else

OUTPUT = INPUT2

Program Statement

```
CALL SWITCH(INPUT1 = input1%,           &  
            INPUT2 = input2%,           &  
            SELECT = select@,           &  
            OUTPUT=output%)
```

Inputs

I (INPUT1) =

INTEGER signal input 1. This parameter must be specified.

I2 (INPUT2) =

INTEGER signal input 2. This parameter must be specified.

SE (SELECT) =

BOOLEAN signal select. This parameter must be specified. When TRUE, INPUT1 is connected to OUTPUT. When FALSE, INPUT2 is connected to OUTPUT.

Outputs

O (OUTPUT) =

INTEGER signal output. This parameter must be specified.