

Appendix P

The Edit Configuration File Utility

The EditConf utility is a stand-alone Windows application intended for engineers designing AutoMax systems. This utility enables you to extract the variable information from an AutoMax rack's variables database into a text file, edit this file, and then rebuild the variables database from the text file.

After you have selected an AutoMax rack, the EditConf utility will lock the rack, lock the network database with a read-only lock, and then create a configuration text file for the rack. All network variables in the rack which are linked to network-wide names will be resolved and written as NETDEFs (not GBLDEFs) to the configuration text file. After the file is generated, the text editor will be called, and you can edit the text file. When you terminate the edit session, you will have the option of linking all network variables to their corresponding network-wide names by address. The utility will then replace the rack's variable database with the contents of the edited configuration text file.

Follow these steps to use this utility:

- Step 1. From Windows, click Start, then Run. The Run dialog box is displayed.
- Step 2. Enter the path for your AutoMax Programming Executive followed by EDITCONF.EXE, for example, C:\RPE\AMX4\EDITCONF.EXE.
- Step 3. The "Edit Configuration Information" dialog box is displayed. Choose Yes to proceed, or No to exit the utility.
- Step 4. The "Text Edit Config" dialog box is displayed. Select the drive, directory, system, section, and rack whose configuration you want to edit (see figure P.1). Choose OK to proceed, or Close to exit the utility.
- Step 5. The text editor is opened. Edit and then save the rack configuration file.
- Step 6. The "Import Configuration" dialog box is displayed. You can select Linked or Unlinked for Network variables. If you select Linked, the Global Name field of the variables database will be updated with the corresponding name from the network database. Choose Continue to replace the variable configuration for the rack with the contents of the edited configuration file, or Abort to exit the utility (no changes to the rack configuration).
- Step 7. An information dialog box confirming that the database has been updated is displayed. Select OK to exit the utility.

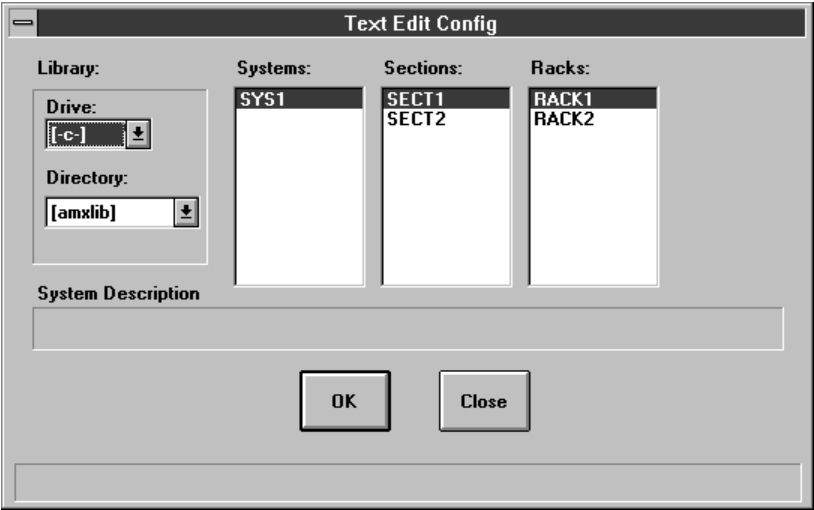


Figure P.1 - Text Edit Config Dialog Box