

# 15.0 ONLINE MENU: RUNNING TASKS

## WARNING

**UNDERSTAND THE APPLICATION BEFORE STARTING A TASK. OUTPUTS MAY CHANGE STATE, RESULTING IN MACHINE MOVEMENT. FAILURE TO OBSERVE THESE PRECAUTIONS COULD RESULT IN BODILY INJURY.**

## WARNING

**IT IS THE RESPONSIBILITY OF THE USER TO ENSURE SAFE OPERATION OF THE APPLICATION PROCESS SHOULD THE APPLICATION TASKS BE STARTED OUT OF SEQUENCE. FAILURE TO OBSERVE THESE PRECAUTIONS COULD RESULT IN BODILY INJURY.**

## WARNING

**THE USER MUST PROVIDE AN EXTERNAL, HARDWIRED EMERGENCY STOP CIRCUIT OUTSIDE THE CONTROLLER CIRCUITRY. THIS CIRCUIT MUST DISABLE THE SYSTEM IN CASE OF IMPROPER OPERATION. UNCONTROLLED MACHINE OPERATION MAY RESULT IF THIS PROCEDURE IS NOT FOLLOWED. FAILURE TO OBSERVE THIS PRECAUTION COULD RESULT IN BODILY INJURY.**

Note that a task may need to perform initialization before entering the main loop or the scanned portion of the task. When the task is started, this initialization will pre-empt any task which may be running at a lower priority. Depending on the application, this may result in a STOP-ALL error.

The RUN option from the Online menu is used to put AutoMax and UDC tasks loaded onto the rack into run. You can put tasks into run individually, or you can put all tasks in the rack into run. Utility tasks will also be put into run by running all tasks as described in 15.2. The keyswitch must be in the PROGRAM position and the password must be entered to run any task. You must also obtain either rack access or task access for all the tasks you want to run.

Your first step in running tasks depends on whether you want to run one task only or all the tasks in the rack. Follow the directions in 15.1 for running one task only. Follow the directions in 15.2 for running all tasks specified in the configuration for the rack.

*NOTE: If you are editing a Ladder program online, you must pause the Ladder Editor before you can access the Online Task Manager, since they both share the same communication channel. See the Ladder Editor instruction manual, J2-3093, for more information.*

## 15.1 Running an Individual Task

### WARNING

**THIS COMMAND OVERRIDES THE NORMAL STARTING SEQUENCE OF THE APPLICATION TASKS, WHICH IS DETERMINED BY THE PRIORITY ASSIGNED WHEN THEY ARE ADDED TO THE RACK. THE RUN ALL OPTION SHOULD NORMALLY BE USED TO START TASKS. FAILURE TO OBSERVE THIS PRECAUTION COULD RESULT IN BODILY INJURY.**

Follow the directions below to put an individual task into run:

1. Select the task to be run from those displayed on the Online menu. To select the task, use the up and down arrow keys to move the ">" pointer to the desired task.
2. Type the "Enter" or <CR> key. The selected task will be shown in reverse video.
3. Type "R" to put the task into run. The task "Status" field on the display will show that the task is in RUN.

Note that UDC tasks can be run regardless of whether the PMI is communicating with the UDC.

## 15.2 Running All Tasks in the Rack

To run all AutoMax and UDC tasks in the rack, including utility tasks, using the procedure described in this section, all tasks in the rack except utility tasks must be loaded in the rack. If this is not the case, the screen will display an error message and no tasks will be put into run.

Follow the directions below to put all tasks in the rack into run:

1. Do not select an individual task while at the Online menu. Instead, type "R" from the Online menu with no task selected. This results in the display shown in figure 15.1.

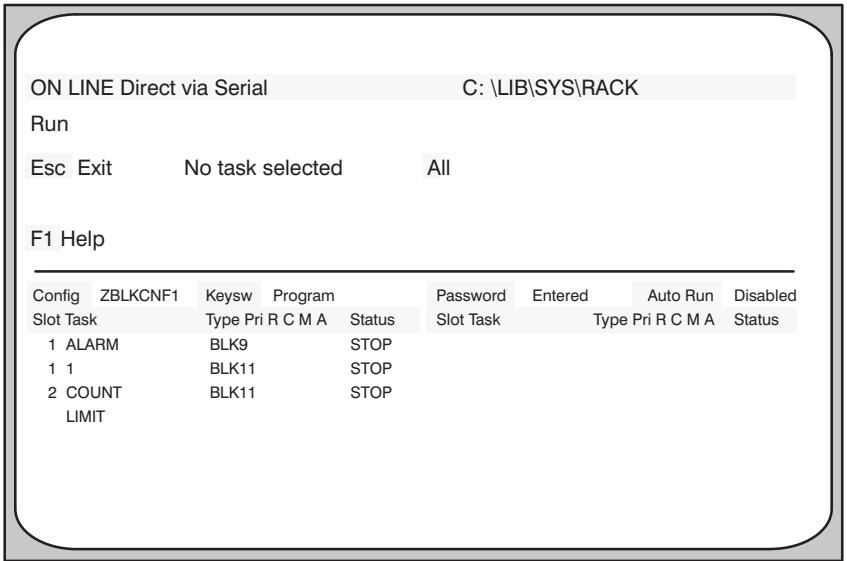


Figure 15.1 - Run All Display

- To run all the tasks, type "A" for all. The "Status" field will show all tasks in RUN. AutoMax Tasks are started in order of priority from the highest priority (4) to the lowest priority (11). Tasks at the same priority level are started in alphabetical order. Tasks on different Processors are started independently of each other. UDC tasks are always run drive A task first, followed by the drive B task.