

11.0 AutoMax ONLINE MENU

The Online menu in the System Configurator and the Task Manager applications allows you to access the Online Task Manager menu shown in figure 11.1. Options on this menu are used to load, run, stop, monitor, and modify application tasks in the rack and to connect to other racks on the network(s). In addition, this menu provides access to the error log kept for each AutoMax Processor or UDC module running tasks.

The Online menu in the System Configurator and Task Manager applications allows you to monitor PC (ladder) programs. Ladder programs are monitored using the AutoMax Ladder Editor. Selecting Monitor PC Program launches the Ladder Editor. Refer to instruction manual J2-2093 for more information about monitoring ladder programs.

Before attempting to use any of the options in the Online Task Manager menu, you must load the operating system onto the Processor modules and UDC modules in the rack if you have not already done so. Refer to 5.4.3 for directions on loading the operating system.

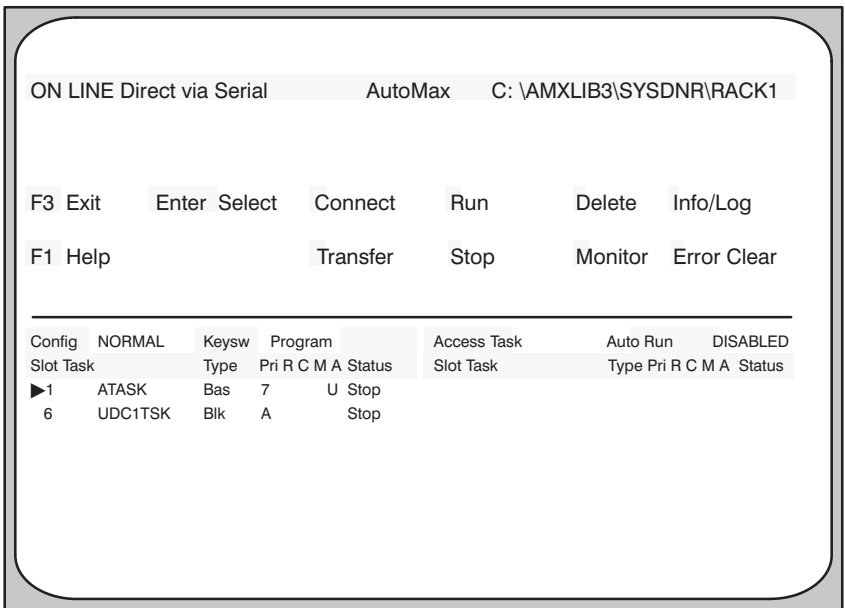


Figure 11.1 - Online Task Manager Menu

When you select Online Task Manager you will be prompted to connect the cable to the leftmost Processor in the rack and then press "Enter" or <CR> if the cable is not already connected. If you have already connected the cable, simply enter a <CR> to go online. If you have not connected the cable, refer to the directions in 3.3. Once you are online, you will see the menu shown in figure 11.1.

When you first go into the Online menu, the fields in the status line displayed on the screen directly beneath the horizontal line will be empty if there are no tasks loaded on the rack at this time. A sample

display when there is one task running in the rack is described in 11.3 and shown in figure 11.2.

Use F3 to exit the Online menu and return to the System Configurator or Task Manager application.

11.1 Online Menu Options

Online operations are not run in the Windows environment. Selections are made using the keyboard exclusively. You use the first letter of each option (shown in reverse video) instead of function keys to select the option. The default DISK:\LIBRARY\SYSTEM\RACK, i.e., the path, is displayed in the upper right-hand corner of the screen.

The "Enter (Select)" option stands for the ENTER key. Certain options will require that an application task be selected before you can choose the option. The Enter key will select the task on the screen preceded by a ">" symbol. This symbol, in turn, is controlled by the arrow keys.

In addition, the "Enter" key is often used to terminate entry of required information in fields and move to the next field.

Online menu options are described in the sections below as follows:

Connect	(12.0)
Info/Log	(13.0)
Transfer	(14.0)
Run	(15.0)
Stop	(16.0)
Delete	(17.0)
Monitor	(18.0)
Error Clear	(19.0)

11.2 Online Menu Security

The options available to you when you are online depend on the position of the keyswitch and whether you enter the correct password. See 12.2 for directions on entering the password. See section 9 for more information about the keyswitch and system security.

11.3 Online Menu Display

The AutoMax Executive maintains a real-time display of the status of up to 32 tasks in the rack when you are online. Figure 11.2 shows the Online menu as it appears when there is one task running in the rack.

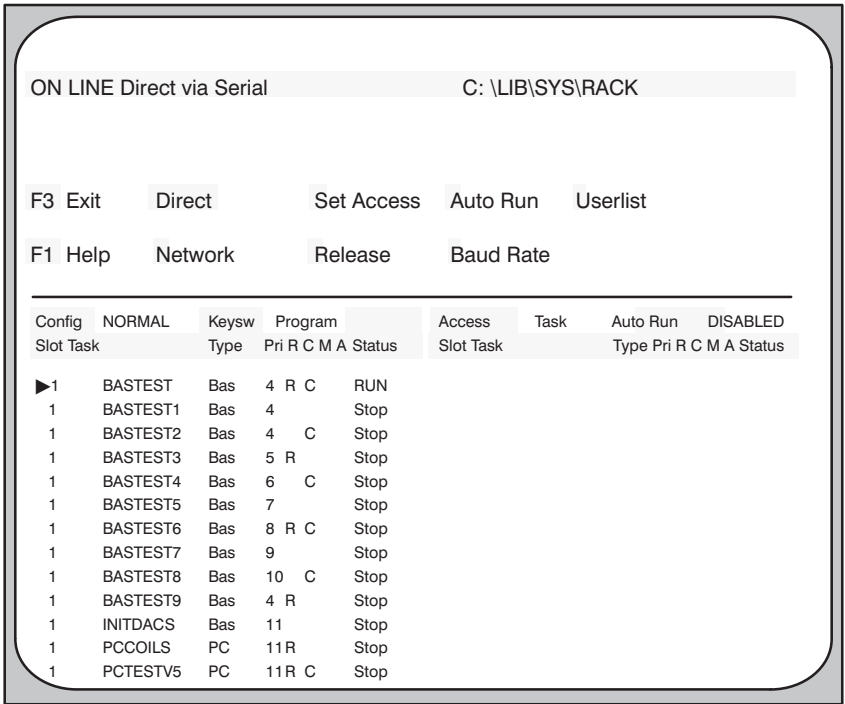


Figure 11.2 - Online Menu Display with Task Running

The top status line displays general information about the rack. The “Config” field shows whether the NORMAL or DEBUG version of the rack configuration has been loaded to the rack. If the rack configuration has not been loaded, “NONE” will be displayed. The keyswitch position, Program in this case, is shown in the “Keysw” field. The “Forced” field, when shown, indicates whether there are any forced variables in the rack. See 18.5 for more information on forcing.

The user’s access level is displayed in the field “Access” as None, Data, Rack, Locked, or, as shown here, “Task”. “Auto Run” is either “enabled” or as shown here, “Disabled”. See 12.4 for more information about AUTO-RUN.

The second status line displays specific information about tasks in the rack. “Slot” denotes the AutoMax Processor or UDC module on which the task is running. “Task” is the name of the task and “Type” denotes the programming language (.BLK, .BAS, or .PC).

“Pri” is the task’s priority as defined in the configuration for the rack. The priority ranges from 4 (highest) to 11 (lowest). UDC tasks do not display a priority. “A” is displayed for Drive A tasks; “B” is displayed for Drive B tasks. See Appendix C for more information on task priority. The field “R” will show an R if the task is reconstructible. See 8.1.1 for more information about the /Reconstruct option used in compiling tasks.

Field “C” will show a C if the task has been designated as CRITICAL in the configuration for the rack. CRITICAL tasks are those that cannot be stopped individually, i.e., all tasks must be stopped in order for the task in question to be stopped.

An M in field “M” indicates that the task has been modified, but has not been saved from the Processor module. This field is used only when tunables have been changed either by the operator, or for UDC tasks, by the PMI operating system, or when Ladder Logic tasks have been modified. For more information about saving tasks from the Processor module, see section 14.4.

Field “A” will show a “U” if the user has task access, or “O” if another user has task access to the task. For single user (non-network) applications, this field will be blank or will display “U” if the user has edited the task.

Finally, “Status” shows whether each task loaded in the rack is currently running (RUN) or stopped (STOP), and whether there has been an error (ERROR) in each task.