

# System-1

ONE SYSTEM • ONE SOURCE • ONE SOLUTION

## Performance & Convenience from System-1

Rockwell Automation offers a unique service aimed at providing customized solutions for customers. This service, known as System-1, combines the functions of inside sales, marketing and engineering to provide a single source for the design, selection and procurement of multiple component systems.

Once the System-1 Group receives the customer's specifications, the criteria are reviewed and the correct products for the application are selected and priced. The group then checks into deliveries and provides a written quote to the customer. Throughout the process, they work to ensure that the order is available when the customer needs it.

One point of contact within the System-1 Group covers all of the product lines we offer. Whether you need a standard package or are looking for one that is more customized, System-1 is the source for all of your product needs. System-1 also has the capability to ship the total package pre-assembled and on a single pallet. If products are to be assembled on-site, the items are boxed together for ease of identification. All orders are tagged on the outside of the pallet or box with the description number designated for the project.

A centralized source for warranty administration is also a feature of System-1. If one of the products you ordered needs warranty attention, you can call the System-1 Group directly. Our experts will assess the situation and provide a solution to satisfy your warranty needs.

## Lowering Total Cost of Ownership for Industry

System-1 has a long history of providing drive and tail conveyor assemblies for the aggregate industry. These systems are designed to provide long lasting, power-matched solutions to meet bulk material conveying requirements. They incorporate high quality, long lasting DODGE and RELIANCE products, including reducers, conveyor pulleys, bearings, take-up frames and motors. A quick selection guide is available for pre-engineered assemblies and simplifies the design of the conveyor process because the selection of components is already done. For users requiring a more customized bulk conveyor solution, System-1 offers a complete package of power-matched DODGE and RELIANCE products, selected for specific applications.

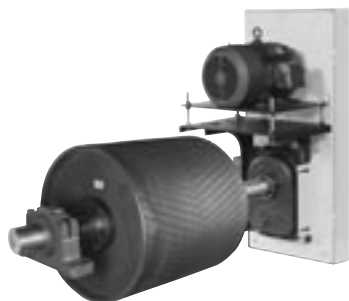
The System-1 Group is also able to provide a standard solution for the food and beverage industry. System-1 offers these users a standard package that includes three products well suited for their applications: a DODGE QUANTIS Unit, a RELIANCE XE Motor and a Reliance SP600 AC Drive. The combination of these products offers users lower maintenance costs and more versatility.

In a typical food plant, onverting equipment and conveyors are often powered by a mechanical drive. However, the standard package offered by System-1 presents a more reliable and efficient solution because our drive is easy to control and monitor with an external keypad. Our package also operates at more than 90% efficiency, requires less maintenance and maximizes customer uptime.

Standard packages offered for this industry can be specified for either in-line or right-angle configurations based on the applications. For users that require washdown capabilities, there is also a modified package containing products specially manufactured for these environments.

The System-1 Group brings performance and convenience to every order they receive. By providing ease of selection, procurement and delivery, the System-1 Group is able to lower your total cost of ownership, while providing the power-matched product solutions you need for all your mechanical and electrical power transmission needs.

For more information on these services, contact a System-1 Product Specialist at 864-284-5767 or access our System-1 Page located at [www.dodge-pt.com](http://www.dodge-pt.com) or [www.reliance.com](http://www.reliance.com).



## Bulk Conveyor

Use System-1 to quote your Bulk Conveyor Drive Systems. Packages include Dodge and Reliance products such as: Mine Duty Extra Conveyor Pulleys, TAF Bearings, Torque Arm II Shaft Mounted Reducers, D-V Sheaves, Fluid Couplings and Premium Efficient Extra Tough Motors.

System-1 also offers pre-packaged drive and tail conveyor assemblies. These packages were designed for Bulk Conveyor applications offering a variety of common configurations. The drive system utilizes a Reliance Motor driving a Torque Arm II Shaft Mount Reducer through a v-belt drive. System-1 will ship the motor, reducer and v-drive assembled with the belt guard and motor mount. The pulley, shaft and bearings will be delivered as a single piece, ready to be mounted to the reducer. Contact a System-1 representative to receive the most efficient power transmission solution available.



## Custom Fabricated Baseplates

System-1 can provide custom fabricated base plates for mounting various Dodge Gear Reducers and Reliance Motors, including made to order coupling and v-belt drive guards.



## Variable Speed Drives

Packages include Dodge Quantis Gear Reducers with Reliance Premium Efficient motors and Reliance Variable Frequency Drives for variable speed applications. These packages provide compact, low maintenance solutions that are easy to install.



## Creep Drive

A Reliance motor drives a Dodge Maxum Reducer through a fluid coupling for a soft start to maximize the life of the system. When the driven equipment needs to be inspected, an over-running clutch disengages the main drive and engages a smaller Reliance/Dodge drive system connected to the main drive input shaft. The equipment now runs at a fraction of the normal operating speed. This complete package is delivered pre-assembled on a heavy duty baseplate for ease of installation



## Pump Assemblies

Customer supplied pumps can be coupled via Dodge coupling or v-belt drive to Reliance motor with a slide base for belt tensioning. All components are assembled on a custom made baseplate fabricated to meet the customer's specifications. A custom made safety yellow guard is designed specifically for the application. This solution allows for easy integration into the customer's existing application.



## Offset Parallel

System-1 provides offset parallel drive packages for applications requiring high horsepower which can include the incorporation of external backstops.

## Why Should You Use System-1?

- Saves you time
- Project coordination
- Optimized product selection
- Products / services bundling
- Pre-assembled Packages
- Freight administration
- Single source warranty
- Reduces the Total Cost of Ownership.

# CUSTOMIZED CONVEYOR PACKAGE SOLUTIONS

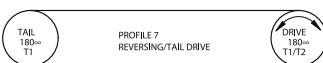
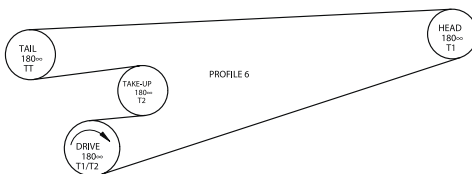
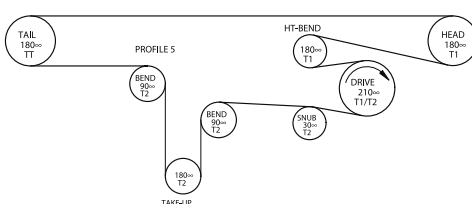
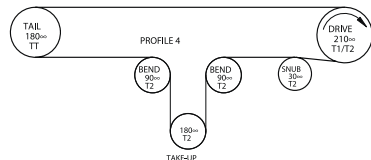
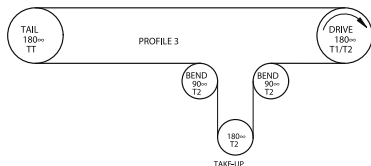
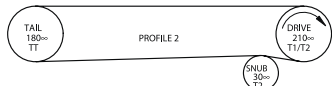
Use this quick fax form to receive your customized solution quotation

TO : SYSTEM-1 GROUP  
 FAX: (864) 281-2355  
 RE: CUSTOMIZED QUOTATION

FROM: \_\_\_\_\_  
 COMPANY / CUST NUM: \_\_\_\_\_  
 CITY, STATE: \_\_\_\_\_  
 PHONE: \_\_\_\_\_  
 FAX: \_\_\_\_\_

Desired System Capacity (TPH) _____	Length of Conveyor _____
Material Type _____	Change in Elevation _____
Estimated Weight of Material _____	Number of Belt Scrapers/Plows _____
Desired Belt Width _____	Idler Angle _____
Desired Belt Speed _____	Bearing Center Distance _____

Desired Conveyor Profile (Please Circle Your Selection)



Additional Comments

- |                       |   |   |
|-----------------------|---|---|
| Motor Type:           | Calibre (Cast Iron) <input type="checkbox"/>      | Extra-tough <input type="checkbox"/>              |
|                       | E-master <input type="checkbox"/>                 | Torque Max (High Torque) <input type="checkbox"/> |
|                       | Aggregate Industry <input type="checkbox"/>       |   |
| Reducer Type:         | Quantis <input type="checkbox"/>                  | Maxum <input type="checkbox"/>                    |
|                       | Torque-Arm (TXT) <input type="checkbox"/>         | Cyclone <input type="checkbox"/>                  |
|                       | Torque-Arm II (TAII) <input type="checkbox"/>     |   |
| Bearing Type:         | SCM Ball Bearing <input type="checkbox"/>         | TAF <input type="checkbox"/>                      |
|                       | Type-E <input type="checkbox"/>                   | Imperial SAF <input type="checkbox"/>             |
|                       | S-2000 <input type="checkbox"/>                   | USAF <input type="checkbox"/>                     |
|                       | Imperial <input type="checkbox"/>                 | Split-sphere <input type="checkbox"/>             |
| Conveyor Pulley Type: | Cema Drum <input type="checkbox"/>                | Cema Wing <input type="checkbox"/>                |
|                       | Mine Duty Drum <input type="checkbox"/>           | Mine Duty Extra Wing <input type="checkbox"/>     |
|                       | Mine Duty Extra Drum <input type="checkbox"/>     |   |
|                       | 1/2" Herringbone Lagging <input type="checkbox"/> | Wing Lagging <input type="checkbox"/>             |
|                       | 1/2" Plain Lagging <input type="checkbox"/>       |   |
|                       | 1/2" Diamond Lagging <input type="checkbox"/>     |   |
|                       | 1/2" Holz Lagging <input type="checkbox"/>        |   |

Local Drive Solution Centers

Explosion Proof Motors

Custom Classics

System-1

Model Number Index

# CUSTOMIZED VARIABLE SPEED DRIVE SOLUTIONS

Use this quick fax form to receive your customized solution quotation

TO: SYSTEM-1 GROUP  
FAX: (864) 281-2355  
RE: CUSTOMIZED QUOTATION

FROM: \_\_\_\_\_  
COMPANY / CUST NUM: \_\_\_\_\_  
CITY, STATE: \_\_\_\_\_  
PHONE: \_\_\_\_\_  
FAX: \_\_\_\_\_

Motor HP / Voltage: \_\_\_\_\_  
Reducer Output Speed: \_\_\_\_\_  
Reducer Configuration: \_\_\_\_\_

- Right Angle
- In-Line
- Offset Parallel
- Worm Gear

- Output Connection:
- Chain Drive
  - Synchronous Drive
  - Coupled

Mounting:

- Shaft
- Baseplate
- Flange

Softstart Device:

- Yes
- No

Motor/Reducer Connection:

- Direct Coupled
- Belt Driven
- C-face

Environment:

- Standard
- Extra Tough
- Washdown
- Division I

Output Torque Requirements: \_\_\_\_\_  
IS High Starting Torque Required?  
Yes   
No

Classes \_\_\_\_\_  
Groups \_\_\_\_\_  
Temp Code \_\_\_\_\_

Variable Speed  
Yes   
(Circle One) Constant or Variable Torque  
Speed Range \_\_\_\_\_  
No

Division II   
Classes \_\_\_\_\_  
Groups \_\_\_\_\_  
Temp Code \_\_\_\_\_

Application Description / Other Comments: