

METRE 1

Totally Enclosed (IC 411) - IP55

Electrical Characteristics

Phase: 3
Frequency: 50 Hz @ 230/400 Volts
 60 Hz @ 460 Volts
Ambient: 40° C
Duty Cycle: Continuous
Insulation: Class F
Temp. Rise: Class B
Service Factor: 1

Application Information

For use on fans, blowers, compressors, pumps, conveyors and process machinery that require IEC frames.

Key Information

Definitions:

EFF1 Compliant
 Meets IEC 34-1&2 electrical
 IEC 72-1 mechanical

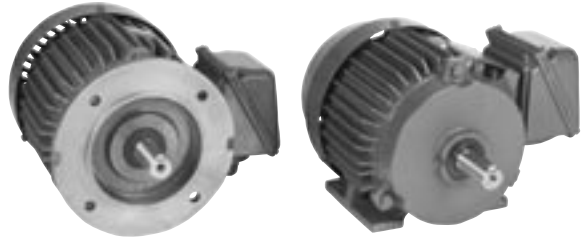
Warranty (From Date Of Manufacture / From Date Of Installation): (24/12)

Nameplate Agency Approvals:
 CE, CSA, CEMEP

CONSTRUCTION FEATURES

D80 - D280M Frames

Materials: Cast iron frame, end shields and conduit box. Steel fan cover
Conduit Box: B3 or B5 mounting
Bearing Type: Double shielded, permanently lubricated (80 - 180 frames)
 Open, re-greasable (200 - 280 frames)
Bearing Protection: Shaft slinger
Thermal Protection: Thermistors on 160 frames and larger
Shaft Material: High strength carbon steel
Nameplate Material: Aluminum
Drain Type & Location: T-drains in both end shields
Inverter capable: 4:1 constant torque
Additional Features: Opposite Drive End shaft is drilled and tapped to accept a stub shaft for the mounting of a shaft mounted encoder without the need to modify the motor



METRE 1

Totally Enclosed (IC 411) - IP55



Foot Mounted (B3) .37 - 110 Kw

| KW | Synch RPM | Voltage | Frame | Enclosure | Product | Model Number | List Price | Price Symbol | "C" Dim. in mm | Notes | Approx. Wt. (lb) |
|-----------|-----------|-------------|-------|-----------|---------|--------------|------------|--------------|----------------|-------|------------------|
| 0.37/.44 | 1500/1800 | 230/400/460 | 80 | TEFC | Metre 1 | M80G7450 | \$333 | RXC20 | 274 | | 38 |
| 0.55/.66 | 1500/1800 | 230/400/460 | 80 | TEFC | Metre 1 | M80G7451 | 341 | RXC20 | 274 | | 38 |
| 0.75/.9 | 3000/3600 | 230/400/460 | 80 | TEFC | Metre 1 | M80G7448 | 320 | RXC20 | 274 | | 38 |
| 0.75/.9 | 1500/1800 | 230/400/460 | 80 | TEFC | Metre 1 | M80G7452 | 350 | RXC20 | 274 | | 38 |
| 1.1/1.32 | 3000/3600 | 230/400/460 | 90S | TEFC | Metre 1 | M90G7448 | 375 | RXC20 | 302 | | 81 |
| 1.1/1.32 | 1500/1800 | 230/400/460 | 90S | TEFC | Metre 1 | M90G7451 | 375 | RXC20 | 302 | | 81 |
| 1.5/1.80 | 3000/3600 | 230/400/460 | 90S | TEFC | Metre 1 | M90G7449 | 410 | RXC20 | 327 | | 90 |
| 1.5/1.80 | 1500/1800 | 230/400/460 | 90L | TEFC | Metre 1 | M90G7453 | 442 | RXC20 | 327 | | 90 |
| 2.2/2.64 | 3000/3600 | 230/400/460 | 90L | TEFC | Metre 1 | M90G7450 | 468 | RXC20 | 367 | | 115 |
| 2.2/2.64 | 1500/1800 | 230/400/460 | 100L | TEFC | Metre 1 | M10G7450 | 499 | RXC20 | 367 | | 115 |
| 3/3.60 | 3000/3600 | 230/400/460 | 100L | TEFC | Metre 1 | M10G7448 | 550 | RXC20 | 367 | | 115 |
| 3/3.60 | 1500/1800 | 230/400/460 | 100L | TEFC | Metre 1 | M10G7451 | 567 | RXC20 | 367 | | 115 |
| 4/4.80 | 3000/3600 | 230/400/460 | D112M | TEFC | Metre 1 | M11G7448 | 665 | RXC20 | 382 | | 120 |
| 4/4.80 | 1500/1800 | 230/400/460 | D112M | TEFC | Metre 1 | M11G7450 | 676 | RXC20 | 382 | | 120 |
| 5.5/6.60 | 3000/3600 | 230/400/460 | D132S | TEFC | Metre 1 | M13G7462 | 850 | RXC20 | 450 | | 170 |
| 5.5/6.60 | 1500/1800 | 230/400/460 | D132S | TEFC | Metre 1 | M13G7474 | 871 | RXC20 | 450 | | 170 |
| 7.5/9.00 | 3000/3600 | 230/400/460 | D132S | TEFC | Metre 1 | M13G7463 | 925 | RXC20 | 488 | | 185 |
| 7.5/9.00 | 1500/1800 | 230/400/460 | D132M | TEFC | Metre 1 | M13G7475 | 1,104 | RXC20 | 488 | | 185 |
| 11/13.2 | 3000/3600 | 230/400/460 | D160M | TEFC | Metre 1 | M16G7463 | 1,380 | RXC20 | 603 | | 281 |
| 11/13.2 | 1500/1800 | 230/400/460 | D160M | TEFC | Metre 1 | M16G7472 | 1,480 | RXC20 | 603 | | 281 |
| 15/18.0 | 1500/1800 | 230/400/460 | D160L | TEFC | Metre 1 | M16G7473 | 1,886 | RXC20 | 647 | | 316 |
| 18.5/22.2 | 1500/1800 | 230/400/460 | D180M | TEFC | Metre 1 | M18G7472 | 2,349 | RXC20 | 676.5 | | 381 |
| 22/26.4 | 1500/1800 | 230/400/460 | D180L | TEFC | Metre 1 | M18G7473 | 2,764 | RXC20 | 714.5 | | 416 |
| 30/36.0 | 1500/1800 | 230/400/460 | D200L | TEFC | Metre 1 | M20G7471 | 3,660 | RXC20 | 772.5 | | 491 |
| 37/44.4 | 1500/1800 | 230/400/460 | D225S | TEFC | Metre 1 | M22G7472 | 4,927 | RXC20 | 817 | | 561 |
| 45/54 | 1500/1800 | 230/400/460 | D225M | TEFC | Metre 1 | M22G7473 | 5,993 | RXC20 | 842 | | 801 |
| 55/66 | 1500/1800 | 230/400/460 | D250S | TEFC | Metre 1 | M25G7472 | 6,853 | RXC20 | 950.5 | | 842 |
| 75/90 | 1500/1800 | 230/400/460 | D250M | TEFC | Metre 1 | M25G7473 | 8,708 | RXC20 | 988 | | 1162 |
| 90/108 | 1500/1800 | 230/400/460 | D280S | TEFC | Metre 1 | M28G7472 | 11,597 | RXC20 | 1083.5 | | 1543 |
| 110/132 | 1500/1800 | 400/460 | D280M | TEFC | Metre 1 | M28G7473 | 14,313 | RXC20 | 1134.5 | | 1764 |

Explosion Proof

Washdown Duty

Single Phase

Brake Motors

575 Volt

IEC

For additional product information, go to www.reliance.com



METRE 1

Totally Enclosed (IC 411) - IP55

Footless (B5 flange) .37 - 18.5 Kw

| KW | Synch RPM | Voltage | Frame | Enclosure | Product | Model Number | List Price | Price Symbol | "C" Dim. in mm | Notes | Approx. Wt. (lb) |
|-----------|-----------|-------------|-------|-----------|---------|--------------|------------|--------------|----------------|-------|------------------|
| 0.37/.44 | 1500/1800 | 230/400/460 | 80 | TEFC | Metre 1 | ◆ M80G7460 | \$333 | RXC20 | 300 | | 38 |
| 0.55/.66 | 1500/1800 | 230/400/460 | 80 | TEFC | Metre 1 | ◆ M80G7461 | 341 | RXC20 | 300 | | 38 |
| 0.75/.90 | 3000/3600 | 230/400/460 | 80 | TEFC | Metre 1 | ◆ M80G7458 | 320 | RXC20 | 300 | | 38 |
| 0.75/.90 | 1500/1800 | 230/400/460 | 80 | TEFC | Metre 1 | ◆ M80G7462 | 350 | RXC20 | 300 | | 38 |
| 1.1/1.32 | 3000/3600 | 230/400/460 | 90S | TEFC | Metre 1 | ◆ M90G7458 | 350 | RXC20 | 302 | | 81 |
| 1.1/1.32 | 1500/1800 | 230/400/460 | 90S | TEFC | Metre 1 | ◆ M90G7461 | 375 | RXC20 | 302 | | 81 |
| 1.5/1.80 | 3000/3600 | 230/400/460 | 90L | TEFC | Metre 1 | ◆ M90G7459 | 410 | RXC20 | 327 | | 90 |
| 1.5/1.80 | 1500/1800 | 230/400/460 | 90L | TEFC | Metre 1 | ◆ M90G7463 | 442 | RXC20 | 327 | | 90 |
| 2.2/2.64 | 3000/3600 | 230/400/460 | 90L | TEFC | Metre 1 | ◆ M90G7460 | 468 | RXC20 | 327 | | 90 |
| 2.2/2.64 | 1500/1800 | 230/400/460 | 100L | TEFC | Metre 1 | ◆ M10G7460 | 499 | RXC20 | 366 | | 115 |
| 3/3.60 | 3000/3600 | 230/400/460 | 100L | TEFC | Metre 1 | ◆ M10G7458 | 550 | RXC20 | 366 | | 115 |
| 3/3.60 | 1500/1800 | 230/400/460 | 100L | TEFC | Metre 1 | ◆ M10G7461 | 567 | RXC20 | 366 | | 115 |
| 4/4.80 | 3000/3600 | 230/400/460 | D112M | TEFC | Metre 1 | ◆ M11G7458 | 665 | RXC20 | 382 | | 120 |
| 4/4.80 | 1500/1800 | 230/400/460 | D112M | TEFC | Metre 1 | ◆ M11G7460 | 676 | RXC20 | 382 | | 120 |
| 5.5/6.60 | 3000/3600 | 230/400/460 | D132S | TEFC | Metre 1 | ◆ M13G7460 | 850 | RXC20 | 450 | | 170 |
| 5.5/6.60 | 1500/1800 | 230/400/460 | D132S | TEFC | Metre 1 | ◆ M13G7471 | 871 | RXC20 | 450 | | 170 |
| 7.5/9.00 | 1500/1800 | 230/400/460 | D132M | TEFC | Metre 1 | ◆ M13G7472 | 1,104 | RXC20 | 488 | | 185 |
| 11/13.2 | 1500/1800 | 230/400/460 | D160M | TEFC | Metre 1 | ◆ M16G7470 | 1,480 | RXC20 | 603 | | 281 |
| 15/18.0 | 1500/1800 | 230/400/460 | D160L | TEFC | Metre 1 | ◆ M16G7471 | 1,886 | RXC20 | 647 | | 316 |
| 18.5/22.2 | 1500/1800 | 230/400/460 | D180M | TEFC | Metre 1 | ◆ M18G7470 | 2,349 | RXC20 | 676.5 | | 381 |

◆ - Inverter Duty. See Page M-258

Cast Iron Frame

ee CC049A

Explosion Proof

Washdown Duty

Single Phase

Brake Motors

575 Volt

IEC

For pricing information or to place orders, go to www.PTplace.com